

# PW MILLAR LTD

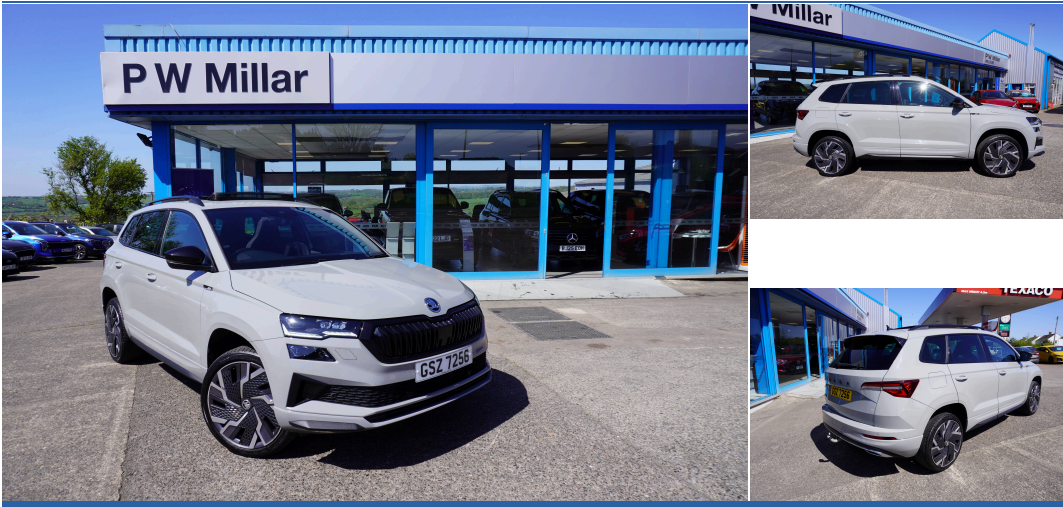
ESTABLISHED 1970

2023-72 | **SKODA KAROQ**

1.5 TSI ACT SportLine DSG Euro 6 (s/s) 5dr | Petrol | Semi Auto | Meteor Grey



<https://www.pwmillarford.co.uk>  
01446 733248



## £19,399

From **£345** per month PCP

Mileage	42,726 miles
Fuel	Petrol
Engine	1.5 litre
Transmission	Semi Auto
Gears	7
Insurance group	20E

### SPECIFICATIONS

Curtain airbags	Advanced driver attention and drowsiness monitor	Aero front windscreen wipers with intermittent function
Foldable hooks in the boot	Non Smokers pack	Black air vent surround
Alarm with interior monitoring, back up horn and tilt sensor with safe function	8 Speakers	Tyre repair kit
Knee airbags	Wireless smartphone charging	Protective door side sills in body colour
Umbrella under passenger seat	LED Interior lighting pack with Skoda welcome logo - Karoq	Satin black door trim
Electronic engine immobiliser	DAB radio with Bluetooth	19" Sagittarius anthracite alloy wheels
Tyre pressure monitor	8" Digital display	Black roof rails
Dual zone climate control	Light Pack - Karoq	carbon door decor
Keyless entry and start/stop	USB connection	Breakdown and tool kit
Emergency rear braking signal	Virtual pedal with electrically operated boot door	LED daytime running lights
Sunvisors with illuminated vanity mirrors	Winter pack with heated front seats - Karoq	Satin black dashboard
Remote central locking with 2 remote folding keys	Anti-theft wheel bolts protection	ESC (incl. ABS+MSR+ASR+EDS+HBA+DSR+RB
Cruise control + speed limiter	Towbar preparation	1.5 litre bottle holders in driver and front passenger door panels
Parking pack - Karoq	Black centre console	Front assist
Amundsen navigation system with 8" touchscreen display and	Black door mirrors	

### TECHNICAL

<b>Performance</b>	
0-100 kmh (62 mph)	<b>9 s</b>
Top speed	<b>130 mph</b>
<b>Emissions Ice</b>	
CO <sub>2</sub> (g/km)	<b>124 (g/km)</b>
<b>Fuel Consumption Ice</b>	
MPG (combined)	<b>44.9 mpg</b>
L/100km (combined)	<b>6.3 l/100km</b>
MPG (combined)	<b>52.3 mpg</b>
MPG (extra urban)	<b>60.1 mpg</b>
MPG (urban)	<b>42.8 mpg</b>
<b>Capacities</b>	
Boot (seats up)	<b>521 litres</b>
Boot (seats down)	<b>1630 litres</b>
Fuel tank	<b>50.8 litres</b>

....MORE.... For the full details please call us or scan the QR code above

01446 733248

[sales@pwmillar.co.uk](mailto:sales@pwmillar.co.uk)

**P W Millar** 148 Port Road East Barry South Glamorgan CF62 9PZ

Whilst every effort has been made to ensure the accuracy of the vehicle specification, some inaccuracies may occasionally occur. It is important that you do not rely solely on this information, but check with a member of the sales staff about any features which may affect your decision to buy the car.