

PW MILLAR LTD

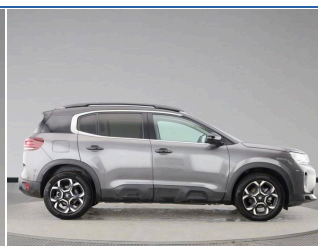
ESTABLISHED 1970

2025-25 | CITROEN C5 AIRCROSS

1.5 BlueHDi MAX Edition EAT8 Euro 6 (s/s) 5dr |
Diesel | Automatic | Platinum Grey



<https://www.pwmillarford.co.uk>
01446 733248



£21,999

From **£404** per month PCP

Mileage **1,815 miles**

Fuel **Diesel**

Engine **1.5 litre**

Transmission **Automatic**

Gears **8**

Insurance group **19E**

SPECIFICATIONS

Seatbelt unfastened audible alert	Citroen connect box emergency assist system	Gloss black longitudinal roof bars
Automatic bi-zone air conditioning with active carbon filter and air quality system, plus controllable row 2 air diffuser	Gloss black colour pack - C5 Aircross	Advanced comfort suspension
Remote central locking + deadlocks	USB A socket (charge only) on rear part of central console	Wheel chock and towing tool
Driver and front passenger side airbags	Cruise control	Radio aerial integrated into rear window
Adjustable headrests (2 in front, 3 in rear)	Drive assist pack - C5 Aircross/Highway driver assist	Electronic code immobiliser
FM and DAB digital radio, 6 speakers	18" Pulsar diamond cut bi tone alloy wheels with Class A+ tyres	Head curtain airbags covering rows 1 and 2 (left and right)
10" Touchscreen user interface with citroen connect nav, voice commands, Bluetooth handsfree and audio streaming	LED rear lights with visual signature	6 way Manual front passenger seat adjustment (height, slide, backrest angle)
Interior lighting package - C5 Aircross	Keyless entry and start	Polyphonic sounds
Front seat belts with double pretensioning, force limiters and height adjustment (driver and passenger)	12.3" digital instrument cluster with customisable zones and colour schemes	Electric heated and folding door mirrors with LED approach lighting and blind spot monitoring indicators
Central storage box with opening central armrest and		

TECHNICAL

Performance	
0-100 kmh (62 mph)	10.6 s
Top speed	117 mph
Fuel Consumption Ice	
MPG (combined)	54.1 mpg
L/100km (combined)	5.2 l/100km
Capacities	
Boot (seats up)	720 litres
Boot (seats down)	1630 litres
Fuel tank	53 litres
General	
NCAP Overall	4

....MORE.... For the full details please call us or scan the QR code above

01446 733248

sales@pwmillar.co.uk

P W Millar 148 Port Road East Barry South Glamorgan CF62 9PZ

Whilst every effort has been made to ensure the accuracy of the vehicle specification, some inaccuracies may occasionally occur. It is important that you do not rely solely on this information, but check with a member of the sales staff about any features which may affect your decision to buy the car.