

# PW MILLAR LTD

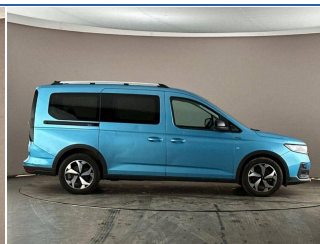
ESTABLISHED 1970

## 2023-23 | FORD TOURNEO CONNECT

2.0 EcoBlue Active Euro 6 (s/s) 5dr, 7 Seats | Diesel | Manual | Boundless Blue



<https://www.pwmillarford.co.uk>  
01446 733248



## £22,999

From **£406** per month PCP

Mileage **4,498 miles**

Fuel **Diesel**

Engine **2 litre**

Transmission **Manual**

Gears **6**

Insurance group **13E**

### SPECIFICATIONS

Front side airbags	Analogue cluster	Weather protection seals
Carpet load floor cover	Restrain device pack 3 - Tourneo Connect/ Grand Tourneo Connect	Standard duty alternator
Locking wheel lug nuts	Media hub 2x USB and rear USB Unit	Less wheel cover
Brakes - (HLA)Hill launch assist/TC	Speed control with ASLD	Body coloured plastic front bumper and skid plates
Glacier fabric upholstery	High acoustics package - Tourneo Connect/ Grand Tourneo Connect	Diesel particulate filter
2 remote flip keys	Steering wheel mounted radio controls	Tyre repair kit
Driver, passenger, 2nd and 3rd row rear seat belt reminder	PAS	Fixed 2nd row LHS and RHS window
Single driver sunvisor illuminated with mirror	Ice feature pack 4 - Tourneo Connect/ Grand Tourneo Connect	Standard duty battery
Engine immobilizer - Securilock	17" Premium painted alloy wheels with centre wheel hub cups and standard tread	ESC with ABS
Brake wear indicator	Electric rear window defroster	Regular size washer tank
Driver assistance package - Tourneo Connect/ Grand Tourneo Connect	50 litre fuel tank	Configurable Unlocking 2
Black seat belts	E-call	Auto headlamps On/off
B Pillar assist handle	Seat pack 18 - Tourneo Connect/ Grand Tourneo Connect	Child proof rear door locks

### TECHNICAL

<b>Performance</b>	
Power	<b>122 bhp</b>
Torque	<b>320 Nm</b>
<b>Fuel Consumption Ice</b>	
MPG (combined)	<b>65.7 mpg</b>
L/100km (combined)	<b>4.3 l/100km</b>
<b>Vehicle Dimensions</b>	
Length	<b>4515 mm</b>
Width	<b>1855 mm</b>
Height	<b>1817 mm</b>
<b>Capacities</b>	
Seats	<b>7</b>
Fuel tank	<b>50 litres</b>
<b>General</b>	
Trim	<b>Active [7 seat]</b>
Power (PS)	<b>122</b>
NCAP Overall	<b>5</b>

....MORE.... For the full details please call us or scan the QR code above

01446 733248

[sales@pwmillar.co.uk](mailto:sales@pwmillar.co.uk)

P W Millar 148 Port Road East Barry South Glamorgan CF62 9PZ

Whilst every effort has been made to ensure the accuracy of the vehicle specification, some inaccuracies may occasionally occur. It is important that you do not rely solely on this information, but check with a member of the sales staff about any features which may affect your decision to buy the car.